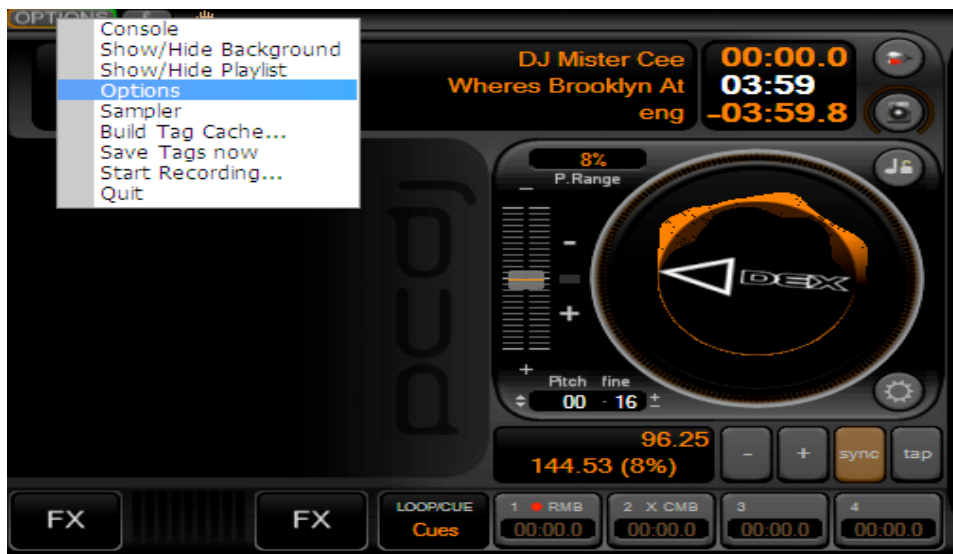
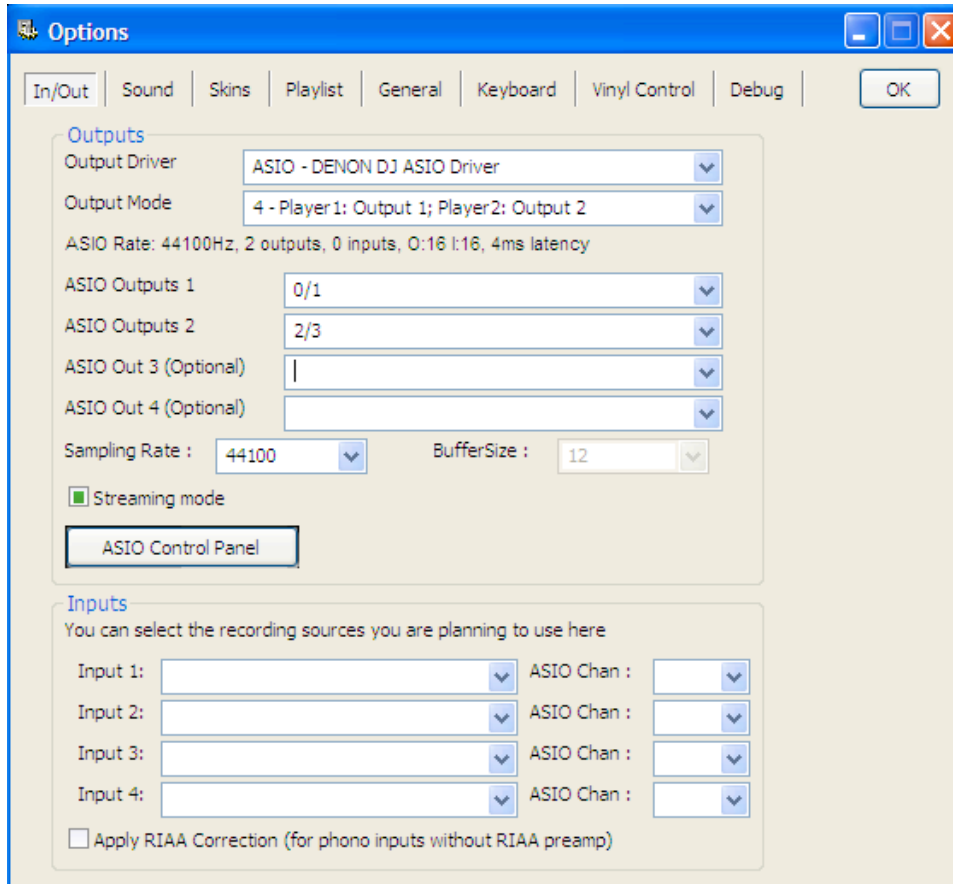


Setting Up 2 Denon DN-5500's

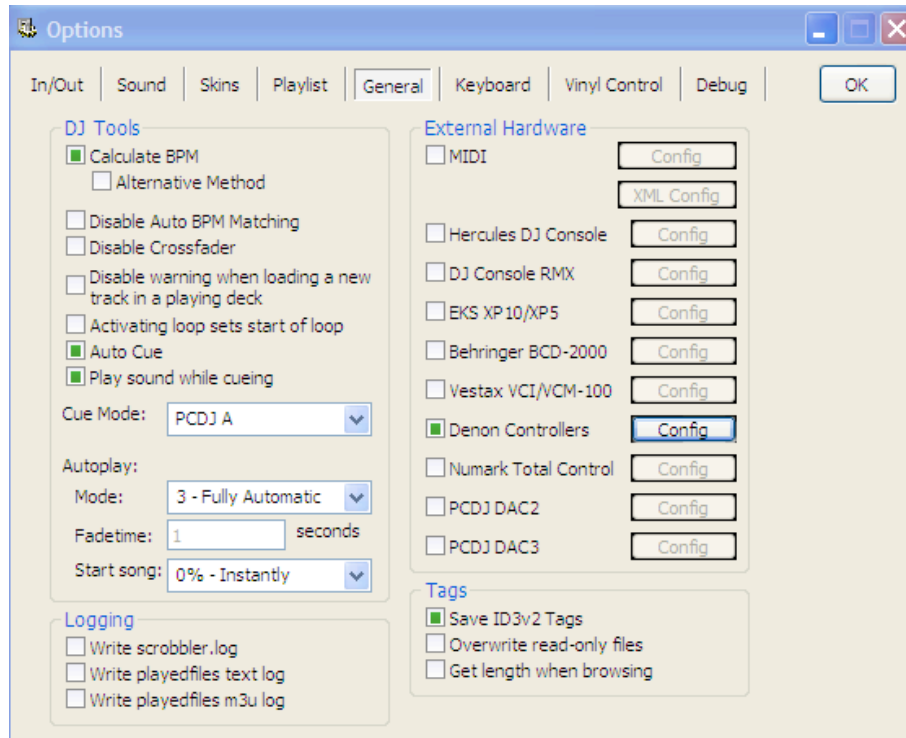
- If you own just "one" player, go into the preset mode and make sure that the MIDI Channel is set to "1"
 - If you own "two" players, go into the preset mode and make sure that:
 - *left deck the MIDI Channel is set to "1"
 - *right deck the MIDI Channel is set to "2"
- For Vista users, set your Jog Trans to 10ms or higher for each deck in the preset mode
For XP users, set your Jog Trans to 1ms for each deck in the preset mode
- Connect USB cable from S3700(s) to PC and set S3700 to MIDI mode
 - Open our ASIO driver app and "enable" the second deck (right-click and enable)
 - Set the ASIO buffer size to 5ms
 - Open Dex, go to Options->



- Select: In/Out > Output Driver > Select: ASIO - Denon DJ Asio Driver
- Select output mode > Player 1 = output 1 Player 2 = output 2



- Click on the "general" tab > Select: 'Denon Controllers' and click 'Config'



- Click drop down and select> HS5500
- Follow other setting shown in image below
- Click the 'connect' button

